

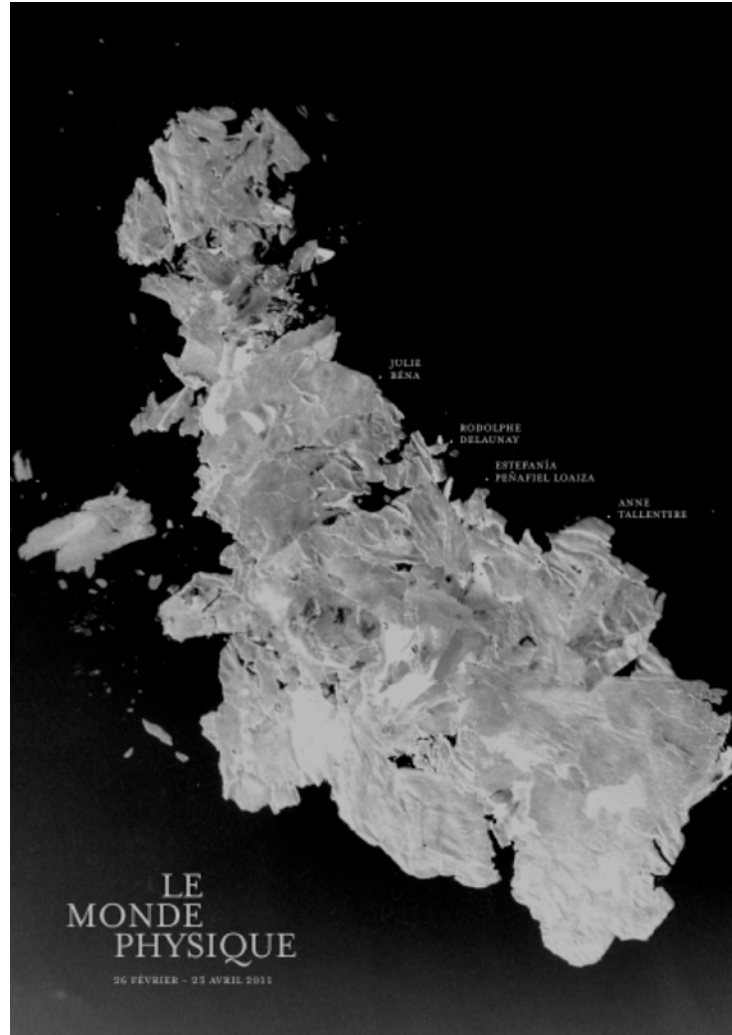
1 rue Jean-Jaurès

F-93130 Noisy-le-Sec

T: +33 (0)1 49 42 67 17

F: +33 (0)1 48 46 10 70

lagalerie@noisysesec.fr



LE MONDE PHYSIQUE [THE PHYSICAL WORLD]

Julie Béna, Rodolphe Delaunay, Estefanía Peñafiel Loaiza, Anne Tallentire
26 February – 23 April 2011

Opening Friday 25 February 6:00–9:00pm

Press preview 5:00–6:00pm in the presence of the artists

A free shuttle will leave Paris (République square/metro République/central strip facing the exit Rue du Temple) at 6:30 pm. Estimated return time 9:30 pm. No advance booking; seating subject to availability.

Contact :

Marjolaine Calipel / Communication, press and publications officer / T: +33 (0)1 49 42 67 17
marjolaine.calipel@noisysesec.fr

Le Monde physique [The Physical World]

In scientific terminology "physical" is applied to a world that can be apprehended through its material properties and visible phenomena. In cartography certain planispheres bear the mention "Map of the Physical World" or, more simply, "The Physical World"; this implies a geographical, geological or climatic interpretation to be distinguished from geopolitical, economic, demographic or other presentations.

Verging overtly on the tautological, the title "The Physical World" suggests a calling into question not only of the nature of that world, but also, by direct inference, the imagining of its opposite. Are there such things as non-physical worlds, and if so, how are they to be represented?

The exhibition "The Physical World" takes this issue of physicality – and possible non-physicality – as its starting point: four artists have produced new works exploring the difference between concrete observation of the world and other types of representation, either more abstract or springing from the imagination.

In her slideshow *Field Study*, based on the inventory of a meadow, **Anne Tallentire** asks us to construct a mental map of the migratory flows triggered by different botanical species. And the interactive video installation *Nowhere Else* has us deciphering her urban roving as imaginary constellations.

Estefanía Peñafiel Loaiza depicts recent political events as a planisphere dotted with imaginary archipelagos. And her *Prière d'insérer*, a site-specific work imperceptibly put together in the Noisy-le-Sec Media Centre, is an invitation to the reader to travel from one book to another.

Julie Béna brings an element of fiction related to the wind to the urban reality of La Galerie's environs. Similarly, her photographic series *Marines* shows sea-travel yielding to a ghostly, underlying reality.

In *Céleste/Terrestre* **Rodolphe Delaunay** offers a stereoscopic merging of the terrestrial and celestial worlds. This evocation of parallel realities reappears in *Vues de l'Enfer*, a group of objects making up a schematic vista of Hell; and in *Ether*, with a pump creating a void in the gallery as if it were a physical world reversed. In his site-specific installation *Boussole* the artist replaces four of La Galerie's oak floor boards with four others, using rosewood from Rio, ebony from Macassar, lemonwood from Sri Lanka and larch from Siberia.

As rechanneled by the artists, compasses, globes, maps and satellite images morph into mental, fictional and mythical projections. The works making up "The Physical World" embody personal attempts by each artist at establishing their spatial bearings – terrestrial, maritime, celestial – through a fresh approach to the standard points of reference.

All the works on show have either been made especially for the exhibition or are being shown in France for the first time.

Another site-specific work by **Estefanía Peñafiel Loiza** can be seen at the Roger Gouhier Media Centre in Noisy-le-Sec:

Mondays and Thursdays, 3 - 8pm, Wednesdays, Fridays and Saturdays, 10am - 6pm



Estefanía Peñafiel Loiza, prière d'insérer [Please Insert]

2011

Courtesy of the artist

THE ARTISTS

Julie Béna / www.juliebena.com

Born in 1982 in Paris. Lives and works in Paris and Ivry-sur-Seine.

Graduated from the Villa Arson art school in Nice in 2007, Julie Béna had a solo show "Le juste retour des choses" [Fate was fair] this year in the Surabaya CCCL (Indonesia). With KIT collective, she also participated to "Coulis de framboises" [Raspberry coulis] in the modules of Palais de Tokyo.

News > 12 March - 16 April: personal exhibition, Galerie L MD, Paris

> 5 May - 1 June: Taking part in Salon de Montrouge, Paris

Rodolphe Delaunay / <http://rodolphe.ultra-book.com>

Born in 1984 in Rouen. Lives and works in Paris

Graduated from the Paris art school in 2008, he is represented by Frédéric Lacroix gallery (Paris): <http://galeriefredericlacroix.com>

He participated in 2009 to Salon de Montrouge and had his first solo show "Measure for Measure" at The Window 41 (Paris). He had a second solo show "Magia Naturalis" at Frédéric Lacroix gallery in 2010 and took part in the collective show "As a Stone" (curators: Marianne Lanavère & Simone Menegoi) at SpazioA gallery, Pistoia (Italy).

Estefanía Peñafiel Loiza

Born in Quito (Ecuador). Lives and works in Noisy-le-Sec (currently in residence at La Galerie)

Graduated from the Paris art school in 2006, she attended the post-graduate of the Lyon art school in 2007, and the residency programme La Seine at the Paris art school in 2008.

She is represented by Alain Gutharc gallery (Paris) : www.alaingutharc.com

Her solo shows include "La courbe de l'oubli" [Bend of oversight] at Paul Frèches gallery (Paris), "Parallaxes" at Alain Gutharc gallery in 2009 and "À perte de vue" [As far as the eye can see] at CAB, Art Center Bastille (Grenoble, France).

News > 26 February - 26 March 2011: "Comment dire..." [How to say] with Lévêque, Lopez, Michaux, Ohannessian, Segal, Verna at galerie Alain Gutharc, Paris

> Until 3 March 2011: "Washed Out", group show,
Konsthall C/Central Tvätt, Stockholm

> Until 3 March 2011: "Paradas em movimento: Passado Imperfeito",
group show, São Paulo Cultural Centre

Anne Tallentire / www.annetallentire.info

Born in 1949 in County Armagh, Ireland. Lives and works in London.

Representative for Ireland in Venice Biennale in 1999, she collaborated with John Seth in a practice formalised as work-seth/tallentire, particularly in 2005 in the group show "Densité ±" [Density ± 0] curated by Caroline Ferreira and Marianne Lanavère at the Paris art school.

She had an important solo show "This, and other things 1999 - 2010" at the Irish Museum of Modern Art in Dublin in 2010, accompanied by a monographic catalogue.

She was recently invited to take part in a symposium called *Landscape as the locus for artistic transfers between Ireland, Northern Ireland and Great Britain from 1968 to the present day* organized by University Paris 3 - Sorbonne Nouvelle, Centre Culturel Irlandais in Paris.

Visuals available for the press :



Julie Béna
Marines, 2010
 Series of 4 photographs
 Google Earth images
 43 cm x 30 cm each
 Printing on baryté paper



Julie Béna, *Tumbling tumbleweed*
 2011
 Video and sound device
 Courtesy of the artist



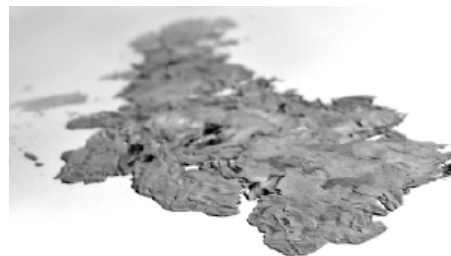
Rodolphe Delaunay
Cyclope panoramique [Panoramic cyclops]
 2010
 Crystal ball, peephole, Ø 10 cm



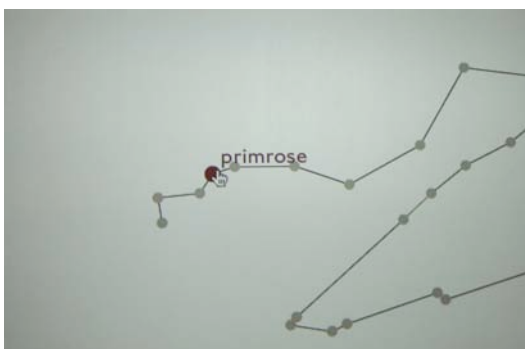
Rodolphe Delaunay, *Ether*
 Vacuum pump
 15 cm x 20 cm x 21 cm
 Photo: Cédric Eymenier



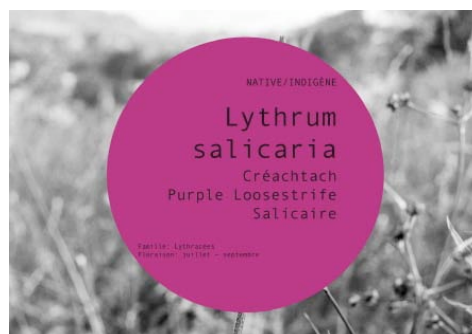
Estefanía Peñafiel Loaiza
 Work in progress, 2011
 Courtesy of the artist



Estefanía Peñafiel Loaiza
 from the series « Une certaine idée du paradis »
 [A Certain Idea of Paradise]
 2011
 Courtesy of the artist



Anne Tallentire, *Nowhere else* (detail)
 2010
 Interactive projection
 Courtesy of the artist



Anne Tallentire,
Field Study 1,
 2010
 Video (4' 30")
 Courtesy of the artist

EVENTS IN ASSOCIATION WITH THE EXHIBITION

(Almost) Closing Time: short films and performances' programme proposed by the artists

In the presence of Julie Béna, Rodolphe Delaunay, Estefanía Peñafiel Loaiza

+ Guest: Julien Discrit

> **Saturday 16 April, 6:00 – 8:30 pm**

Taxi tram: an artistic outing in Île-de-France

Bus trip to the exhibition "The Physical World" at La Galerie Centre for Contemporary Art, Noisy-le-Sec, and the personal exhibition by Philippe Decrauzat at Le Plateau/FRAC Île-de-France

> **Saturday 19 March, all day**

www.tram-idf.fr/6 €. Advance booking required: taxitram@tram-idf.fr

East Trail #5: Bus trip to the visual arts organisations belonging to the Communauté d'Agglomération Est Ensemble

"The Physical World" at La Galerie Centre for Contemporary Art (Noisy-le-Sec)

"M.A.L.E.N.T.E.N.D.U" by Vincent Corpet, at Les Salaisons (Romainville)

"La Formule du Binôme" (François Martig – Philippe Petitgenêt) at Les Instants Chavirés (Montreuil)

> **Saturday 9 April 2:30 – 7:30 pm**

Bus leaves at 2:30 pm from Les Salaisons, 25 Avenue du Président Wilson, Romainville

Metro: Mairie des Lilas

www.parcours-est.com/Free, but advance booking required: resa@parcours-est.com

For children: Saturday art workshops

- **Ages 6–12**

On their own: every Saturday, 2:30 – 4:00 pm

With their parents, afternoon tea included: Saturday 16 April, 2:30 – 4:30 pm

- **Ages 4–5:**

On their own: 4:30 – 5:15 pm

All La Galerie activities are free

LA GALERIE, CONTEMPORARY ART CENTRE, NOISY-LE-SEC / PARIS

La Galerie is a contemporary art centre founded in 1999 and housed in a nineteenth century villa located in the suburb of Paris offering to a wide audience a program based on the notion of art as a sensory experience and a reflection of our relation to the world.



Four exhibitions a year (two monographic, two thematic) accompanied with reference publications, offer hitherto unseen works by internationally recognized artists together with those of emerging French artists.

Following H el ene Chouteau from 1998 to 2004, Marianne Lanav ere was appointed in 2005 as artistic director.

Supporting French artists by **producing art works and residencies**, La Galerie is identified on the international art scene by **hosting foreign curators** since 2006 and by publishing a bilingual publication for each show.

In the framework of each exhibition, the team proposes **educational and cultural activities**, as well as guided documents.

All activities are **free**. A mediation specialist welcomes visitors in the exhibition space. A **documentary area** has recently been installed in the basement.

La Galerie is a non-profit institution publicly financed by the City of Noisy-le-Sec, with the support of the Ile-de-France/Ministry of Culture and Communication Regional Cultural Affairs Board, the Seine-Saint-Denis Department and the Ile-de-France region.

La Galerie is a member of:

d.c.a, French association for the development of art centres : www.dca-art.com

Tram, Contemporary Art network, Paris/ le-de-France : www.tram-idf.fr

PRACTICAL INFORMATION

Contact:

Marjolaine Calipel

Communication, press and publications officer

T: +33 (0)1 49 42 67 17 – marjolaine.calipel@noisylesec.fr

La Galerie

Centre for Contemporary Art

1 rue Jean Jaurès

93130 Noisy-le-Sec

T: + 33 (0)1 49 42 67 17

lagalerie@noisylesec.fr

www.noisylesec.fr

Admission free

Opening hours:

Tuesday – Friday, 2:00 – 6:00 pm

Saturday, 2:00 – 7:00 pm

La Galerie is closed on public holidays

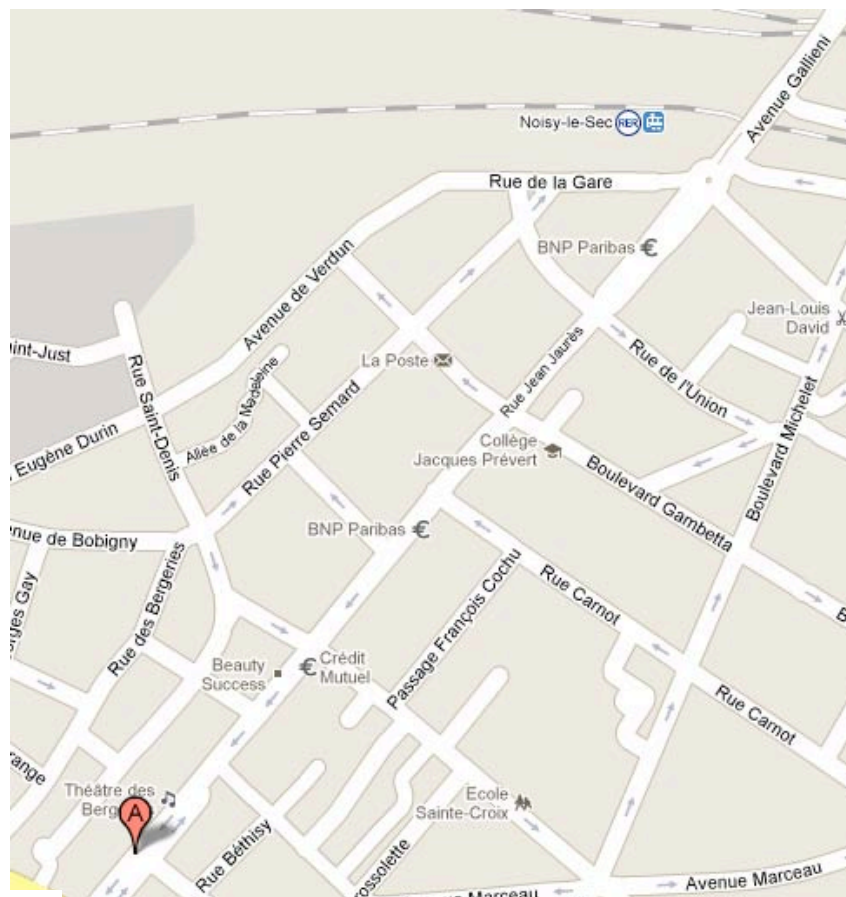
How to get to La Galerie:

RER Line E (10 minutes) from St Lazare/Hausmann or Gare du Nord/Magenta

Get off at Noisy-le-Sec

+ 10 minutes' walk (follow the "Mairie" signs)

Tram T1/Bus 105 or 145



DIARY/UPCOMING EXHIBITIONS

"Les Petits Travaux de La Galerie"

(educational exhibition)

3 May – 14 May 2011

Opening: Tuesday 3 May

"Maps, Timelines, Radio programs"

Curator in residence: Ala' Younis (Jordan)

With Cevdet Erek, Mohssin Harraki, Maha Maamoun,
Oussama Mohammad, Hassan Soliman

28 May – 23 July 2011

Opening: Friday 27 May

Meris Angioletti

Solo show

17 September – 19 November 2011

Opening: Friday 16 September

Georges Tony Stoll

Solo show

Associate curator: Jean-Marc Avrilla

3 December 2011 – early February 2012

Opening: Friday 2 December

Coproduced with Villa Arson, National center of contemporary art (Nice)

La Galerie Contemporary art centre is financed by the city of Noisy-le-Sec, with the support of the Ile-de-France/Ministry of Culture and Communications Regional Cultural Affairs Board, the Seine-Saint-Denis Département and the Ile-de-France Region.



The exhibition and Estefanía Peñafiel Loiza's residency have received additional support from the Seine-Saint-Denis Département.



Anne Tallentire's participation in the exhibition receives the support of Centre Culturel Irlandais in Paris.

